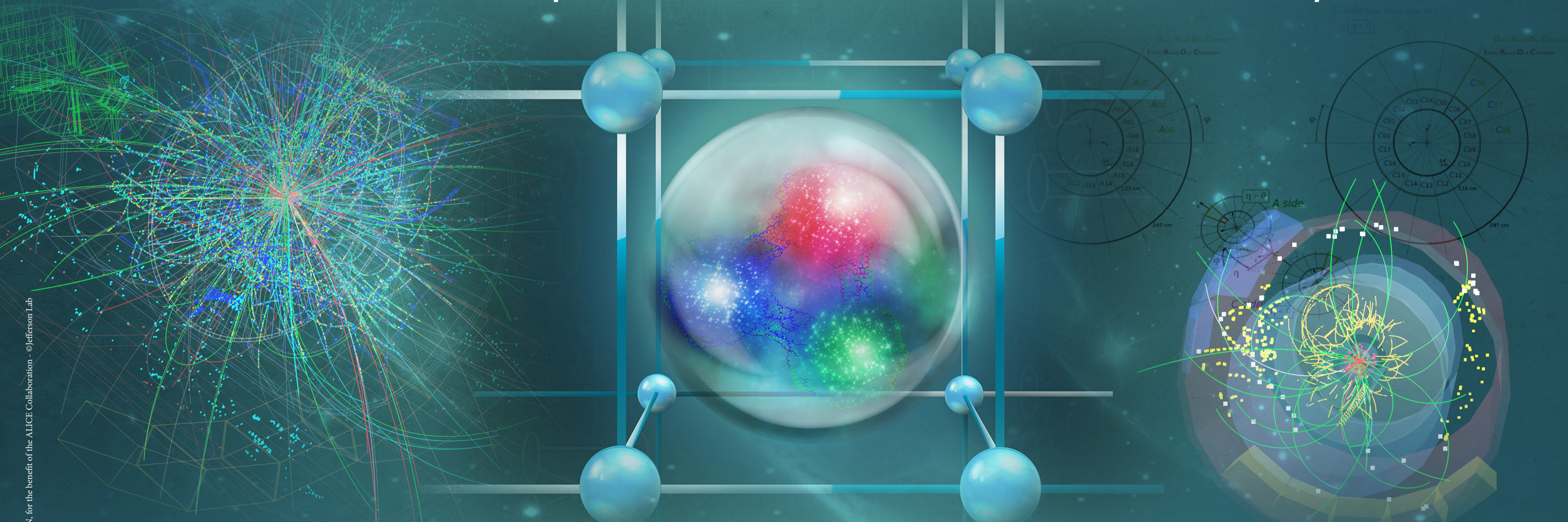




# CORRELATIONS BETWEEN PARTONS IN NUCLEAR SYSTEMS

OCTOBER 7-12, 2018

LA GRANDE MOTTE, FRANCE



## SPEAKERS

- Markus Diehl (DESY, Germany)
- Edmond Iancu (IPhT, Saclay)
- Klaus Werner (SUBATECH, Nantes)
- Jan Fiete Grosse-Oetringhaus (CERN)
- Raphaël Dupré (IPNO, Orsay)
- Thomas Ullrich (BNL/Yale, USA)

[ejc2018.sciencesconf.org](http://ejc2018.sciencesconf.org)  
[ejc2018@sciencconf.org](mailto:ejc2018@sciencconf.org)

## ORGANIZING COMMITTEE

- Guillaume Batigne
- Brigitte Cheynis
- Andrea Ferrero
- François Gelis
- Aurélie Gontier (secretary)
- Antonin Maire
- Miguel Marqués (chair)
- Carlos Muñoz Camacho
- Sarah Porteboeuf

